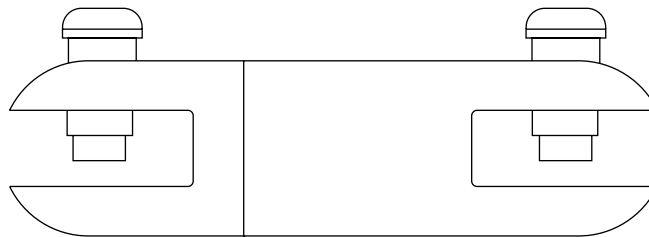


# INSTRUCTION MANUAL



## Swivels

### Description

The Greenlee swivels, when used with a rope connector, are intended for connecting the pull rope to the utility product in an overhead or underground application. The swivel permits rotation of the pull rope while protecting the product from twisting.

- **These swivels are not designed to run around bull wheels.**
- **These swivels are not suitable for directional drilling applications.**
- **These swivels are not intended for lifting applications.**

### Safety

Safety is essential in the use and maintenance of Greenlee tools and equipment. This manual and any markings on the tool provide information for avoiding hazards and unsafe practices related to the use of this tool. Observe all of the safety information provided.

### Purpose of this Manual

This manual is intended to familiarize all personnel with the safe operation and maintenance procedures for Greenlee swivels.

Keep this manual available to all personnel.

Replacement manuals are available upon request at no charge.



**Read and understand** all of the instructions and safety information in this manual before operating or servicing this tool.

## IMPORTANT SAFETY INFORMATION



### SAFETY ALERT SYMBOL

This symbol is used to call your attention to hazards or unsafe practices which could result in an injury or property damage. The signal word, defined below, indicates the severity of the hazard. The message after the signal word provides information for preventing or avoiding the hazard.

#### ⚠ DANGER

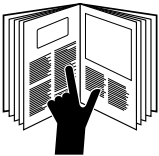
Immediate hazards which, if not avoided, **WILL** result in severe injury or death.

#### ⚠ WARNING

Hazards which, if not avoided, **COULD** result in severe injury or death.

#### ⚠ CAUTION

Hazards or unsafe practices which, if not avoided, **MAY** result in injury or property damage.



#### ⚠ WARNING

Read and understand all of the instructions and safety information in this manual before operating or servicing this tool.

Failure to observe this warning could result in severe injury or death.

#### ⚠ WARNING

Excessive load hazard:

Do not exceed **safe working limit** (see Operating Specifications).

- Operating swivel at loads in excess of its **safe working limit** could cause permanent bearing damage (even though separation due to failure will not occur until the specified ultimate load is reached).
- Operating swivel at loads in excess of its **safe working limit** will void warranty.

Failure to observe this warning could result in severe injury or death.

#### ⚠ WARNING

**Be prepared for the unexpected.**

Use recognized safety practices, and wear recognized safety equipment.

Failure to observe this warning could result in severe injury or death.

#### ⚠ WARNING

Use recommended **safe working limit**:

- For underground use, and use in conduit, the recommended safe working limit is 3:1, based on the ultimate load.
- For overhead use, the required safe working limit is 5:1, based on the ultimate load, due to the higher risk of severe personal injury or property damage.

Failure to observe this warning could result in severe injury or death.

#### ⚠ WARNING

- Never use a worn, defective or incomplete component.
- Ensure that all components of the pulling system are able to withstand the maximum pulling loads. Components not rated for the pull force could break and release the stored energy of the pull.

Failure to observe this warning could result in severe injury or death.

#### ⚠ WARNING

Do not modify or dismantle the line swivel.

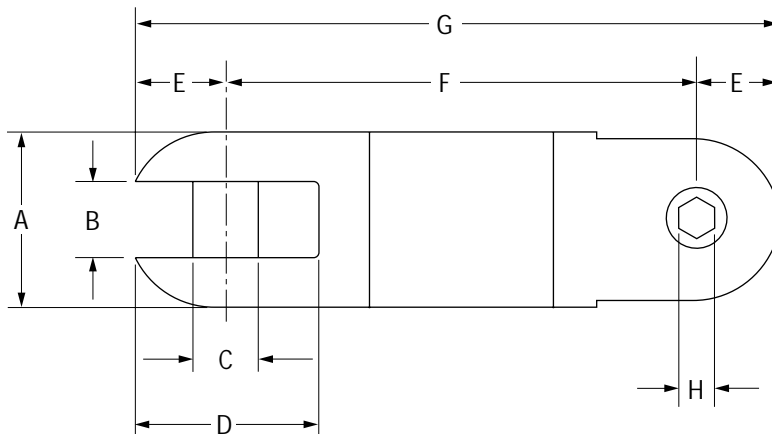
The swivel was assembled, inspected and shipped in its "covered warranty" form. Any attempt to dismantle or modify the swivel will void the warranty and could result in property damage, severe injury or death.

#### ⚠ WARNING

Swivels are not designed to be pulled over sheaves, capstans, bull wheels or bends in conduit, since a bending load acts to increase the tension in the line swivel and may cause damage. If this situation cannot be avoided, select a swivel with a safe working limit that is 20% greater than the anticipated straight tension load.

Failure to observe this warning could result in severe injury or death.

## Operating Specifications


**NOTE:**

Slotted clevis pins are supplied standard on swivels 39106 and 39107.

Hex clevis pins are supplied standard on swivels 39108 - 39111.

Part No.	Underground Safe Working Limit	Overhead Safe Working Limit	A	B	C	D	E	F	G	H	Net Weight
39106	2,250 lb 10 kN	1,350 lb 6.0 kN	7/8" 22 mm	3/8" 9.5 mm	5/16" 7.9 mm	31/32" 24.6 mm	7/16" 11.1 mm	2-1/2" 64 mm	3-3/8" 86 mm	7/32"	0.33 lb 0.15 kg
39107	5,000 lb 22 kN	3,000 lb 13 kN	1-1/4" 32 mm	17/32" 13.5 mm	13/32" 10.3 mm	1-9/32" 32.5 mm	17/32" 13.5 mm	3-11/16" 94 mm	4-3/4" 121 mm	1/4"	1.0 lb 0.45 kg
39108	7,000 lb 31 kN	4,200 lb 19 kN	1-3/8" 35 mm	9/16" 14.3 mm	1/2" 12.7 mm	1-3/8" 35.0 mm	5/8" 15.9 mm	3-7/8" 98 mm	5-1/8" 130 mm	5/16"	1.4 lb 0.63 kg
39109	10,000 lb 45 kN	6,000 lb 27 kN	1-5/8" 41 mm	11/16" 17.5 mm	5/8" 15.9 mm	1-23/32" 43.7 mm	3/4" 19.1 mm	4-1/2" 114 mm	6" 152 mm	3/8"	2.1 lb 0.95 kg
39110	15,000 lb 67 kN	9,000 lb 40 kN	2" 51 mm	25/32" 19.8 mm	11/16" 17.5 mm	2-1/16" 52.4 mm	15/16" 23.8 mm	5-1/8" 130 mm	7" 178 mm	3/8"	3.8 lb 1.7 kg
39111	25,000 lb 112 kN	15,000 lb 67 kN	2-3/8" 60 mm	1-1/32" 26.2 mm	7/8" 22.2 mm	2-25/32" 70.6 mm	1-3/16" 30.2 mm	7-5/8" 194 mm	10" 254 mm	3/8"	7.6 lb 3.5 kg

Dimensions and weights subject to change without notice.

The **Underground Safe Working Limit** is calculated using a 3:1 safety factor based on the ultimate load.

The **Overhead Safe Working Limit** is calculated using a 5:1 safety factor based on the ultimate load.

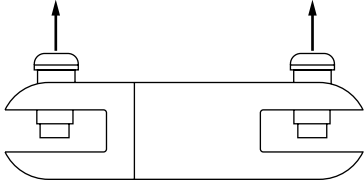
The **Ultimate Load** is the tensile load required to separate the swivel into two or more parts.

All specifications are nominal and may change as design improvements occur. Greenlee Tools, Inc. shall not be liable for damages resulting from misapplication or misuse of its products.

# KEEP THIS MANUAL

## Installation

1. Remove the clevis pins from the line swivel.
2. Insert the items you want to attach into the clevis ends. Re-assemble the clevis pins.



To achieve rated strength, always tighten attachment pins firmly before placing these swivels under load.

**THIS PRODUCT IS NOT SERVICEABLE.** If swivel ceases to operate correctly, replace with new one.

The only replacement/repair part on these swivels are the attachment pins. Use only OEM pins. Do not substitute.

## Maintenance

1. After each use, assess the condition of the swivel, checking for wear and external damage. Check for axial and radial play in the bearings.
2. Replace worn or bent clevis pins with original equipment manufacturer's pins. Replacement kits consisting of two pins are available.

## Replacement Pins

UPC No. 78-3310-	Part No.	Replacement Pin	Use on Swivel
39112	503 9112.7	00010-SLT	39106
39113	503 9113.5	00020-SLT	39107
39114	503 9114.3	00025-SLT	39108
39115	503 9115.1	00030-HEX	39109
39116	503 9116.0	00035-HEX	39110
39117	503 9117.8	00040-HEX	39111



USA                    800-435-0786            Fax: 800-451-2632  
                               815-397-7070            Fax: 815-397-1865  
 Canada                800-435-0786            Fax: 800-524-2853  
 International +1-815-397-7070    Fax: +1-815-397-9247

4455 Boeing Drive • Rockford, IL 61109-2988 • USA • 815-397-7070  
 An ISO 9001 Company

[www.greenlee.com](http://www.greenlee.com)

Printed in USA