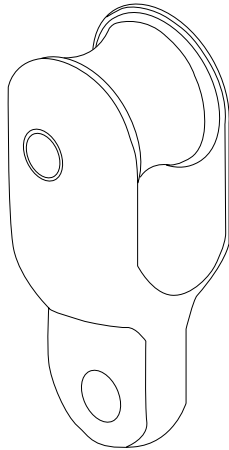


# OPERATION, SERVICE AND PARTS INSTRUCTION MANUAL



## GREENLEE® ROPE CONNECTORS



Rope Connectors are used for attaching 1 inch and smaller diameter pulling rope to Greenlee Swivels.



**Read and understand** this material before using rope connectors. Failure to understand how to safely use this product could result in an accident causing serious injury or death.

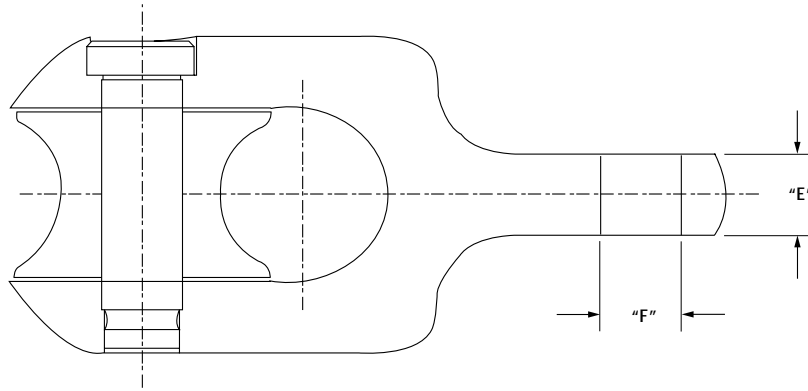
	<b>⚠ WARNING</b>
	Read and understand these instructions and the instructions included with the cable puller. Failure to read and understand safety instructions may result in injury or death.

<b>⚠ WARNING</b>
<ul style="list-style-type: none"><li>• Inspect all pulling system components before installation. Never use a worn, defective or incomplete component.</li><li>• Do not use rope connectors with breakaway swivels. When swivels separate, rope and rope connectors can whip violently, striking nearby personnel with sufficient force to cause severe injury or death.</li><li>• All components and structural mountings used in the pulling system must be able to withstand the maximum pull forces. Use only properly rated components. Improperly rated components may break and strike nearby personnel with sufficient force to cause severe injury or death.</li><li>• Do not stand directly in line with the pull. Broken ropes, cable or grips will make the rope whip violently with enough force to cause severe injury or death.</li><li>• Do not pull rope connectors or swivels over capstans or sheaves. Components other than the rope contacting the capstan could break and strike nearby personnel.</li><li>• Sheave pins must be fully seated. Improperly assembled components can break apart during a pull causing severe injury or death.</li><li>• Do not use rope connectors and swivels for lifting applications.</li><li>• Work in a well-lit, uncluttered area.</li><li>• Use only Greenlee replacement parts.</li></ul> <p>Failure to observe these warnings may result in severe injury or death.</p>

**SAVE THESE INSTRUCTIONS!**

Additional copies are available at no charge.

## Specifications



Cat. / UPC No. 78-3310-	Work Load in Conduit or Underground	Work Load Overhead	Diameter	Length	"E"	"F" Dia.	Use on Swivel
39905	5,000 lbs.	3,000 lbs.	2"	4-11/16"	7/16"	13/32"	39107
39904	7,000 lbs.	4,200 lbs.	2"	4-11/16"	1/2"	1/2"	39108
39903	10,000 lbs.	6,000 lbs.	2"	4-11/16"	9/16"	5/8"	39109
39902	10,000 lbs.	6,000 lbs.	2"	4-11/16"	11/16"	11/16"	39110

*Note: Overhead pulling has a lower working load rating due to the higher risk of personal injury or property damage. To achieve rated strength, always tighten rope connector and swivel pins firmly before use. Rope connectors are to be used with the recommended swivel only.*

## Replacement Parts

Cat. / UPC No.	Description
<b>78-3310-</b>	
39849	Replacement Sheave
39850	Replacement Sheave Pin

# GREENLEE TEXTRON

**Greenlee Textron Inc. / Subsidiary of Textron Inc.**

4455 Boeing Drive, Rockford, IL 61109-2988 USA

General Offices: 815/397-7070

Customer Center and Field Service: 800/435-0786

Fax (24 Hour) Customer Center: 800/451-2632 • 815/397-1865

Canada Fax (24 Hour) Customer Center: 800/524-2853

Printed in U.S.A.